

GLÖTZL Baumeßtechnik

SHUTTERING PRESSURE TRANSDUCER

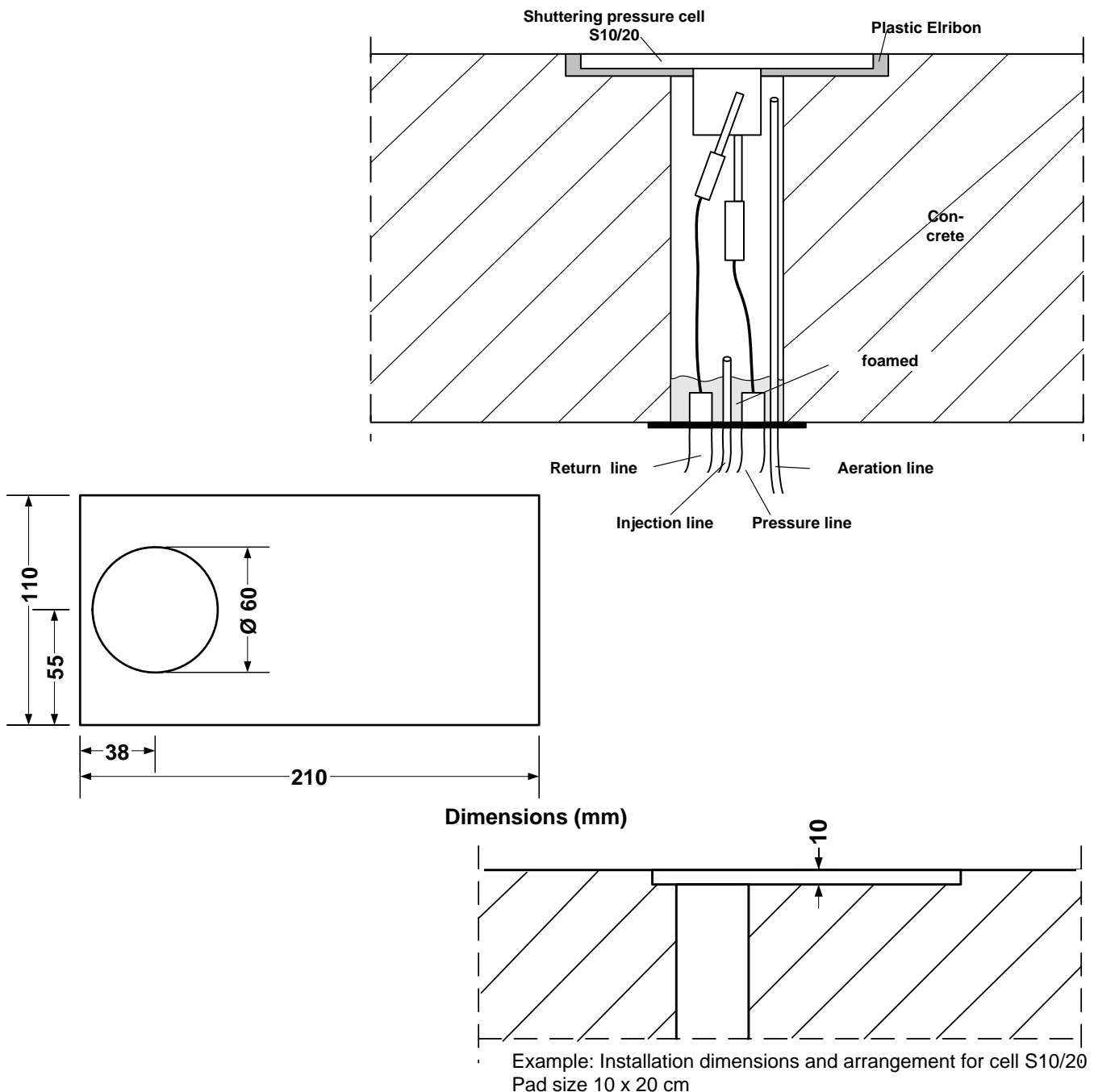
Type: S . . .

Art. No.: 07. . .

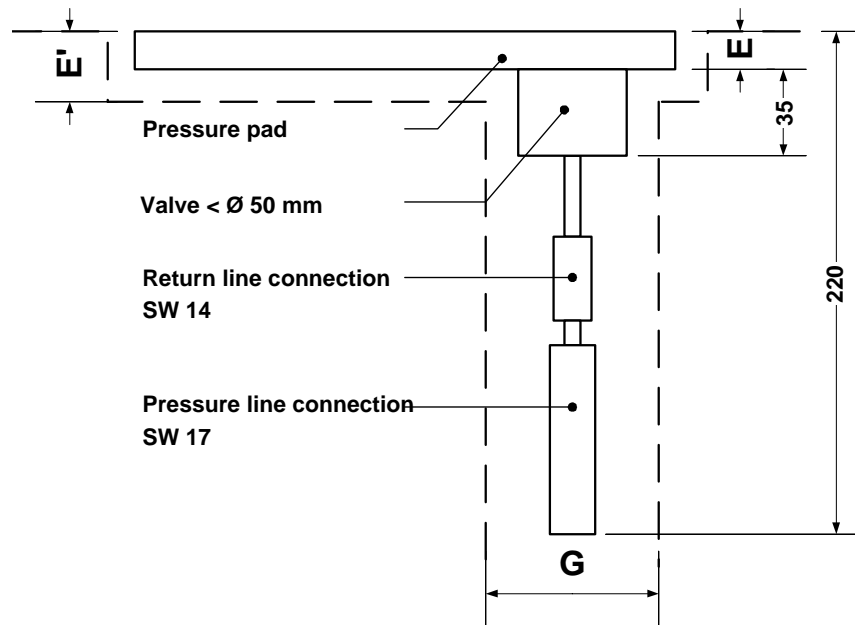
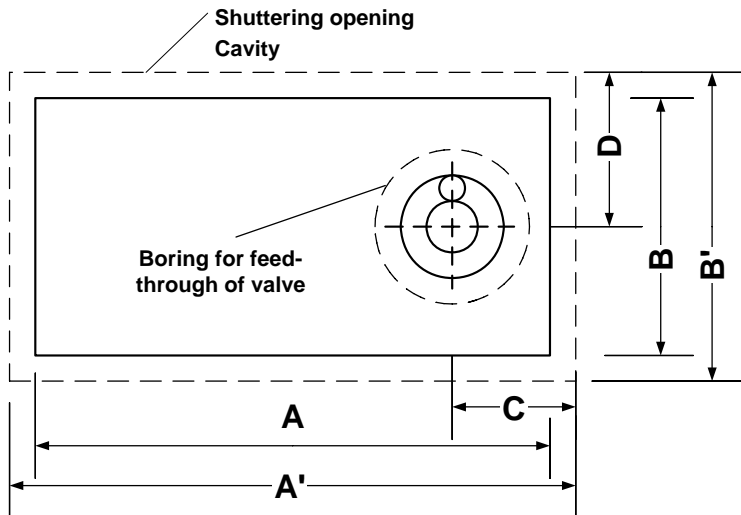
Shuttering pressure transducers are stress cells with hydraulic compensation valve for measurement of compressive stress on an area, e.g. concrete supporting wall, control ways, tubings, sheet piling or shuttering elements.

For a surface-equal installation, a cavity is planned in the surface of the construction element to be controlled in which the cell is located by means of plastic. The valve of the cell and the connections of the measuring tubings are placed at the back. For leading of the tubings and location of the valve a boring has to be done in the construction element, dia 60 – 70 mm, according to the following drawings.

Type S 10/20 installation example:



Dimensions of cells and openings:



Dimensions (all in mm)	S 10/20	S 15/25	S 20/30
A Length of cell	202	256	306
A' Length of cavity	210	270	320
B Width of cell	102	156	206
B' Width of cavity	110	170	220
C Longitudinal axis size of boring	38	43	65
D Transverse axis size of boring	55	85	110
E Thickness of cell	5	7	10
E' Depth of cavity	10	12	15
G Diameter of boring	60	60	70