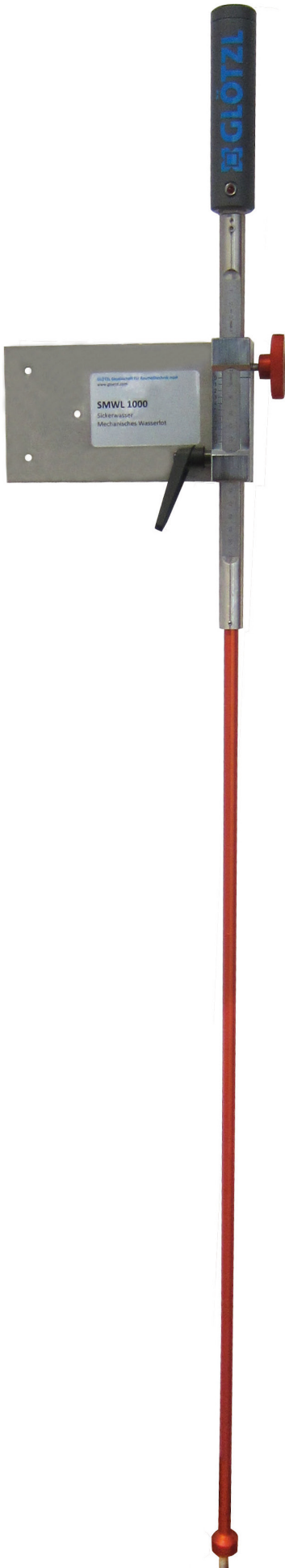


Hook Gauge

SMWL

Art.-No. 88.20.01



The SMWL is used for the stationary and precise control of the water level in artificial flow channels. With a special mechanism, the measuring rod is vertically moved until it touches the water surface. In this moment, which is signaled acoustically and optically, the reading is made on the metric scale with a vernier. The main application of the hook gauge is the hydrological monitoring of water levels and the control of the seepage volumes in dams.

Specifications

Length:	1,8 m
Weight:	2,5 kg
Resolution:	0,1 mm
Reading accuracy:	0,2 mm

Advantages

- Reliable Mechanism
- Precise scaling
- LED- and acoustic signaling

Accessories

- Weir box
- Measuring orifice e.g. V-notch

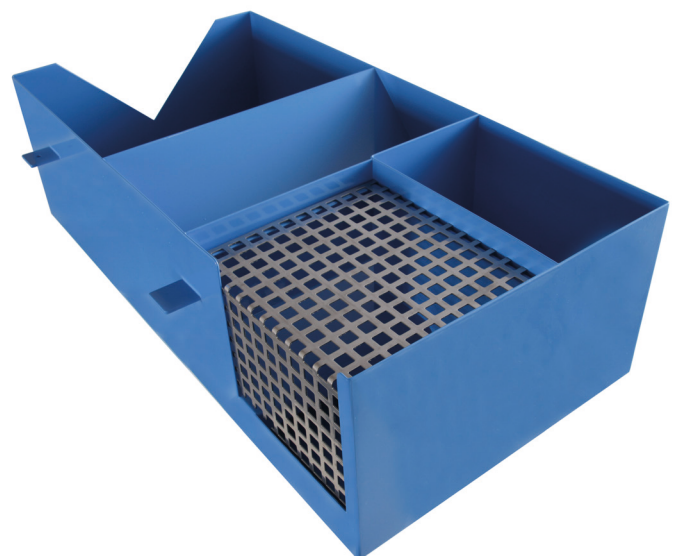


Fig.: Weir box with V-notch